

# XSERIES

MOBILE FALL PROTECTION

EUROPEAN DISTRIBUTOR FOR  
**MALTA DYNAMICS**

Visit [www.Highworx.ie](http://www.Highworx.ie) for more information

Highworx



# INDUSTRIES

- Power Generation
- Military
- Manufacturing
- Aviation
- Steel Erection
- Utilities



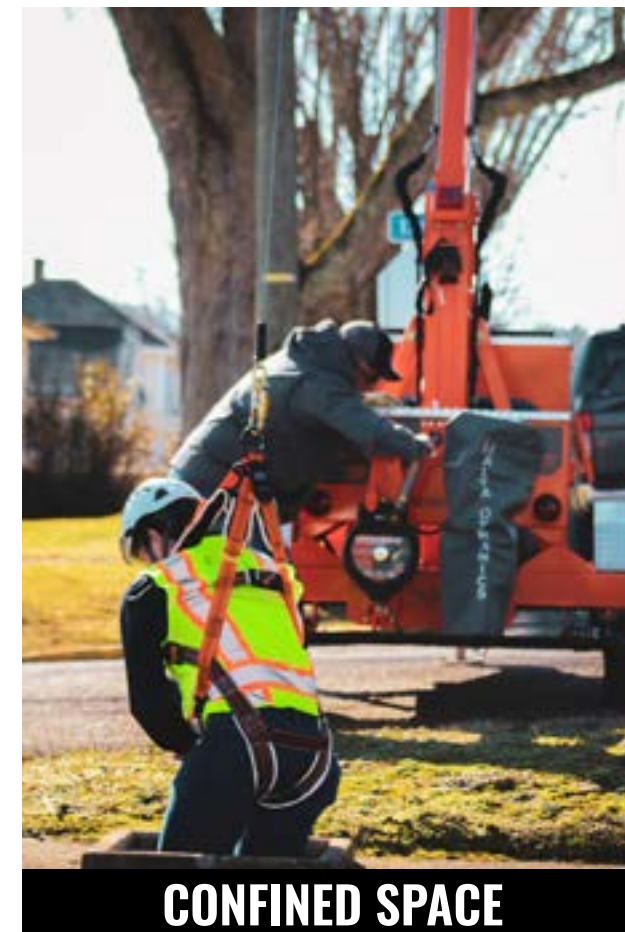
## REAL WORLD FALL PROTECTION, PRACTICAL, PROVEN, AND FAST.

Fall Protection remains the top of OSHA's list for fines, violations, and work-related deaths. Our line of mobile fall protection devices are engineered, tested, and proven to provide superior fall protection anchorage for a wide variety of fall hazards. When you don't know where to anchor, an XSERIES product can provide safe anchorage where others can't. We've increased our offering of products to cover even more fall hazards.

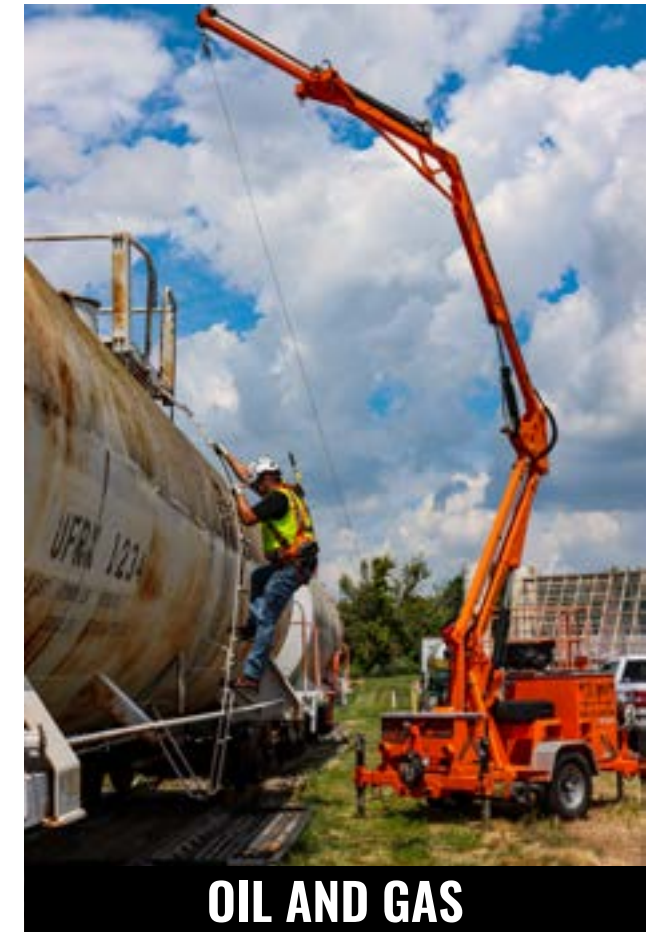
Visit [www.Highworx.ie](http://www.Highworx.ie) for more information



**CONSTRUCTION**



**CONFINED SPACE**



**OIL AND GAS**



**AND THE LIST GOES ON!**

# MOBILE GRABBERS



Model	X1240	X1250	X1260	X1270
<b>Safety Standards</b>				
OSHA Fall Arrest Standards				
Applicable Fall Arrest Standards set forth in ANSI Z359.6				
<b>General</b>				
Weight	5900 lbs.	5900 lbs.	5940 lbs.	6700 lbs.
Max. Working Height	30' (9.1m)	34' (10.4m)	34' (10.4m)	45' (13.7m)
Min. Working Height	2' (.6m)	2' (.6m)	2' (.6m)	2' (.6m)
Max. Folded Height	8'1" (2.6m)	8'1" (2.6m)	8'1" (2.6m)	8'3" (2.5m)
Frame Width	5'9" (1.8m)	5'9" (1.8m)	5'9" (1.8m)	5'9" (1.8m)
Working Frame Width	5'9" (1.8m)	5'9" (1.8m)	5'9" (1.8m)	10'9" (3.3m)
Overall Length	15'6" (4.7m)	15'6" (4.7m)	15'6" (4.7m)	20'10" (6.4m)
Max. Arm Reach Out	4'5.5" (1.4m)	9'9.5" (3m)	9'9.5" (3m)	10'4" (3.1m)
Max. Anchor Point capacity	310 lbs.	310 lbs.	310 lbs.	310 lbs.
Max. Allowable Users	2	3	5	2
<b>Towing</b>				
Max. Towing Speed	Posted Highway Speed	Posted Highway Speed	Posted Highway Speed	Posted Highway Speed
Axle	7000 lbs. Torsion Axle w/Electric Brakes	7000 lbs. Torsion Axle w/Electric Brakes	7000 lbs. Torsion Axle w/Electric Brakes	7000 lbs. Torsion Axle w/Electric Brakes
Tires	225/70/R15 Radials	225/70/R15 Radials	225/70/R15 Radials	225/70/R15 Radials
Receiver	2-5/16" Ball	2-5/16" Ball	2-5/16" Ball	2-5/16" Ball
Trailer Plug Wiring	7-Pole Blade Style lead	7-Pole Blade Style lead	7-Pole Blade Style lead	7-Pole Blade Style lead
<b>Operation</b>				
Actuating Method	Electric-driven Hydraulic system	Electric-driven Hydraulic system	Electric-driven Hydraulic system	Electric-driven Hydraulic system
Controls	Remote (15 ft. cord length)	Remote (15 ft. cord length)	Remote (15 ft. cord length)	Remote (15 ft. cord length)
Power Source	12 volt Battery (210 Amp hour rating) w/30A Fuse & Battery Guage	12 volt Battery (210 Amp hour rating) w/30A Fuse & Battery Guage	12 volt Battery (210 Amp hour rating) w/30A Fuse & Battery Guage	12 volt Battery (210 Amp hour rating) w/30A Fuse & Battery Guage
Charging System	110 Volt quick Smart Charger with Cord	110 Volt quick Smart Charger with Cord	110 Volt quick Smart Charger with Cord	110 Volt quick Smart Charger with Cord
Outrigger System	Four (4) Manually Adjustable Jacks	Four (4) Manually Adjustable Jacks	Four (4) Manually Adjustable Jacks	Four (4) Manually Adjustable Jacks
<b>Hydraulics</b>				
Fluid Type	Mobil DT10 Excel 22	Mobil DT10 Excel 22	Mobil DT10 Excel 22	Mobil DT10 Excel 22
Fluid Capacity	12.5 Gallons	12.5 Gallons	12.5 Gallons	12.5 Gallons



Model	X1000	X1000E
<b>Safety Standards</b>		
OSHA Fall Arrest Standards		
Applicable Fall Arrest Standards set forth in ANSI Z359.6		
<b>General</b>		
Weight	2200 lbs.	2900 lbs.
Max. Working Height	22' (6.7m)	22' (6.7m)
Min. Working Height	17' (5.18m)	17' (5.18m)
Max. Folded Height	7'10" (2.38m)	7'10" (2.38m)
Frame Width	5'8" (1.73m)	5'8" (1.73m)
Overall Length	9'7" (2.92m)	9'7" (2.92m)
Max. Arm Reach Out	3" (.91m)	3" (.91m)
Max. Anchor Point capacity	310 lbs.	310 lbs.
Max. Allowable Users	2	2
<b>Towing</b>		
Max. Towing Speed	Posted Highway Speed	Posted Highway Speed
Axle	-	-
Tires	225/70/R15 Radials	225/70/R15 Radials
Receiver	2-5/16" Ball	2-5/16" Ball
Trailer Plug Wiring	4-Pole Blade Style lead	4-Pole Blade Style lead
<b>Operation</b>		
Actuating Method	Manual Hydraulic system	Electric-driven Hydraulic system
Controls	-	Remote (15 ft. cord length)
Power Source	-	12 volt Battery (210 Amp hour rating) w/30A Fuse & Battery Guage
Charging System	-	110 Volt quick Smart Charger with Cord
Outrigger System	Four (4) Manually Adjustable Jacks	Four (4) Manually Adjustable Jacks
<b>Hydraulics</b>		
Fluid Type	Mobil DT10 Excel 22	Mobil DT10 Excel 22
Fluid Capacity	-	12.5 Gallons





### RESCUE/RETRIEVAL KIT

This optional package helps to satisfy the OSHA requirement for rescue/retrieval options for confined spaces. The Rescue/Retrieval Kit allows an attendant to rescue a worker in need by raising or lowering (bi-directional winching capabilities) them to a safe level. (R1000)



### SOLAR PANELS

Sustain power to the unit maintenance-free by adding high efficiency solar panels. The 60-watt crystalline solar panels are weatherproof and rugged for superior durability to allow extended, worry-free use. (S1000)



### HYDRAULIC JACKS

The XSERIES Mobile Grabber comes standard with quick working drop jacks, but if a powered option is preferred, you can lower and level your XSERIES Mobile Grabber with hydraulic powered jacks. This option has an additional external control box. (X-JACKS)



### SOLID TIRES

These poly-filled tires ensure you never have a flat if your XSERIES Mobile Grabber does not travel on a road. This option is perfect for environments with hot metal/debris as well. (SPT1000)



### STROBE LIGHT

Certain work environments require a strobe light to ensure awareness of work equipment. This is great for aviation, or inside a factory while moving and positioning your XSERIES Mobile Grabber. (X-STROBE)



### WIRELESS OPTION

Get all the functions of the standard corded remote in a compact wireless control that includes all the needed safety features and gives seamless, instant control of the unit with a range of up to 100'. (W1000)



### GROUNDING LUG

There are 4 possible locations on the XSERIES Mobile Grabber to mount our electrical grounding lug. Ensure electrical safety by adding this option. (GR1000)



### GENERATOR MOUNT

Bring power to your work area with our generator mount tray. Made to fit common 2000 watt generators, this sleek tray allows you to power tools on site, or provide your XSERIES Mobile Grabber a quick charge. (X-GENMOUNT)



### XSERIES GO

Add independent mobility for finer positioning at your work site. This system adds two independent electric motors to your unit that drive its wheels, allowing you to position the XSERIES Mobile Grabber without a vehicle attached. (M1000)



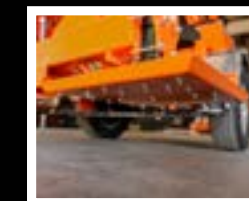
### SPARE TIRE

It never hurts to have a spare! Our Spare Tire Kit contains the spare tire and all needed hardware to be mounted to any existing X1200 series model, and can be easily installed with a few hand tools. (ST1000)



### LED LIGHT

With the LED light add-on, you can provide overhead lighting to shine bright in areas like confined spaces, nighttime jobsites, or in low light working conditions. This option features two lights on top of the XSERIES mast to provide 360 degrees of lit space.



### ICE PADS

With the ice pads add-on for the XSERIES, you can add oversized studded outrigger feet for increased traction in snow and ice. The ice pads are crafted with sturdy all-steel studs and are a must have for colder climates where the XSERIES will be used in snowy conditions.



### LOCKOUT SWITCH

Add the ability to lockout or tagout the machine for work facilities that require it. Located in the rear motor compartment of the unit, the convenient turn style knob is used to safely ensure that the machine cannot be powered on or moved while work is being performed.

**X****SERIES**  
MOBILE FALL PROTECTION



EUROPEAN DISTRIBUTOR FOR

**MALTA DYNAMICS**

Visit [www.Highworx.ie](http://www.Highworx.ie) for more information

**Highworx**